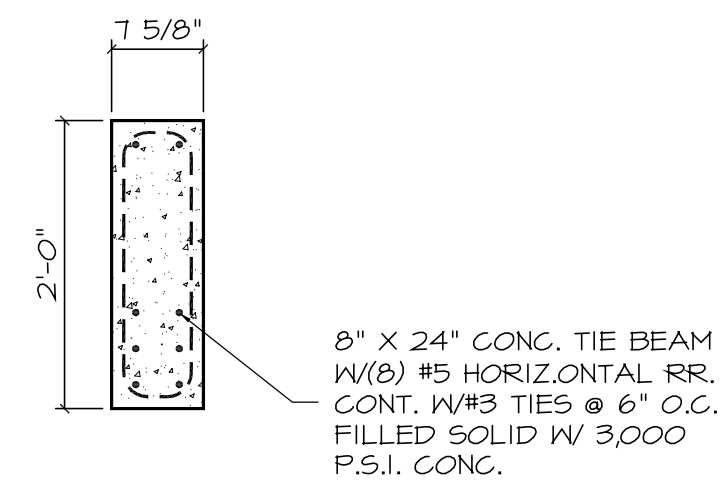


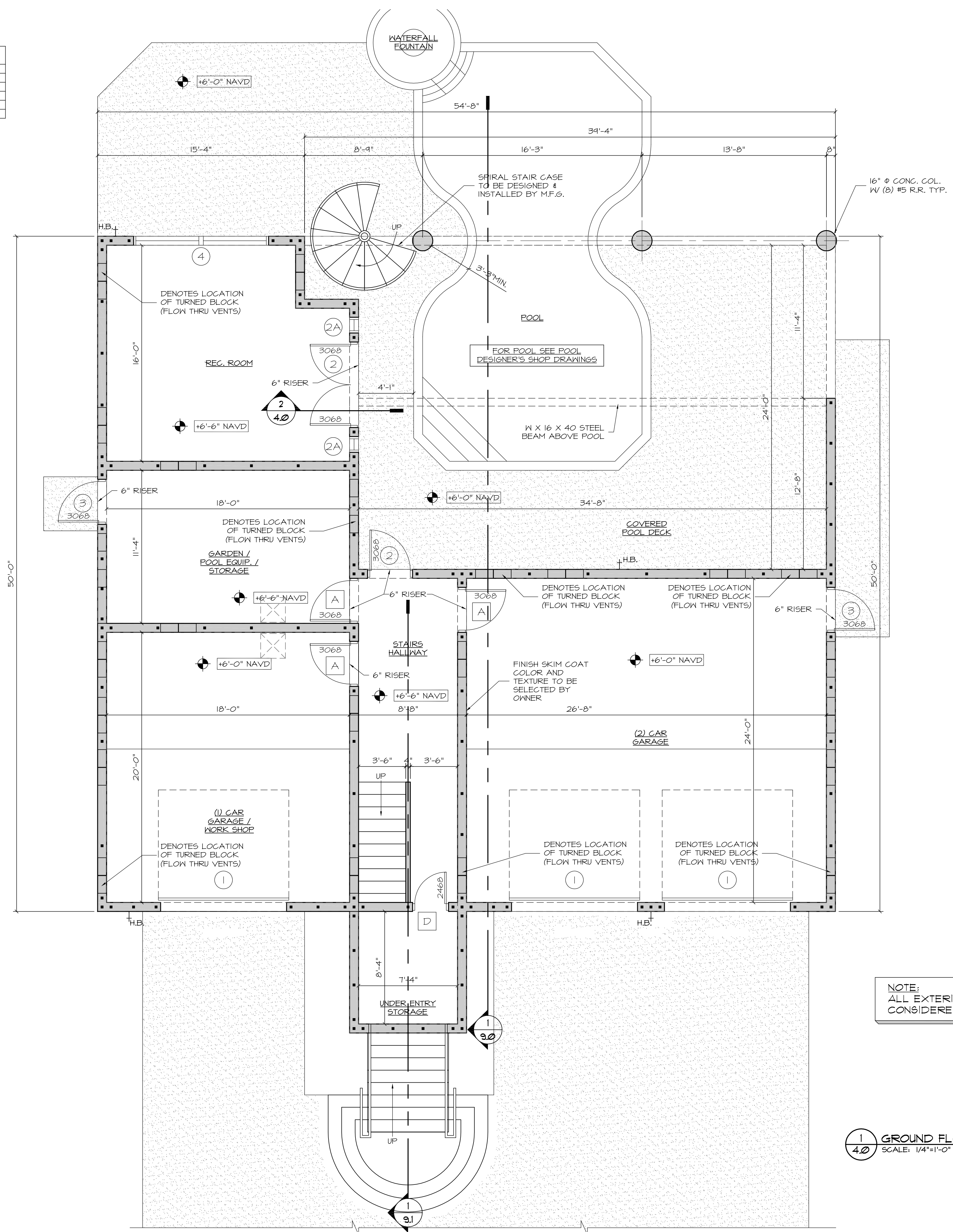
INTERIOR DOOR SCHEDULE			
MARK	SIZE	QTY.	TYPE
A	3'-0" X 6'-8"	3	INT. SOLID CORE
B	2'-8" X 6'-8"	7	INT. SOLID CORE
C	2'-6" X 6'-8"	1	INT. SOLID CORE
D	2'-4" X 6'-8"	1	INT. SOLID CORE
E	2'-0" X 6'-8"	1	INT. BI-FOLD DOOR
F	1'-8" X 6'-8"	1	INT. BI-FOLD DOOR
G	3'-0" X 6'-8"	4	INT. BI-FOLD DOOR
H	2'-8" X 6'-8"	1	INT. POCKET DOOR
I	2'-6" X 6'-8"	1	INT. POCKET DOOR

AREAS		
LIVING GROUND FLOOR	782	SQ. FT.
GARAGE & STORAGE GROUND FLOOR	1121	SQ. FT.
LIVING SECOND FLOOR	2,258	SQ. FT.
COVERED DECKS, VERANDAS, & PATIOS	1,290	SQ. FT.
TOTAL LIVING	3,040	SQ. FT.
TOTAL ALL AREAS	5,451	SQ. FT.

BUILDING OPENINGS / DOOR & WINDOWS			
MARK	SIZE	QTY.	ADVANCED PERFORMANCE
1	9'-4" X 8'-0"	3	GARAGE DOOR (ARCHED)
2	3'-0" X 6'-8"	3	EXT. DOOR
2A	1'-2" X 6'-8"	2	SIDE LIGHTS
3	3'-0" X 6'-8"	2	EXT. STEEL SECURITY DOOR
4	10'-0" X 5'-4"	1	CASEMENT WINDOW
5	6'-0" X 6'-8"	3	FIXED WINDOW
5A	6'-0" X 1'-8"	3	FIXED (ARCH) TRANSOM
6	6'-0" X 6'-8"	1	FRENCH DOOR
6A	6'-0" X 1'-8"	1	FIXED (ARCH) TRANSOM
7	12" X 12"	12	ICE BLOCK
8	3'-0" X 5'-4"	1	CASEMENT WINDOW
8A	3'-0" X 1'-4"	1	FIXED (ARCH) TRANSOM
9	2'-0" X 4'-4"	3	SINGLE HUNG WINDOW
10	2'-0" X 6'-4"	2	CASEMENT WINDOW
11	2'-0" X 5'-2"	1	CASEMENT WINDOW
12	4'-0" X 5'-2"	2	CASEMENT WINDOW
13	2'-8" X 6'-8"	2	FRENCH DOOR
14	3'-6" X 8'-0"	4	GLASS DOOR (CUSTOM)
15	2'-6" X 5'-4"	2	FIXED WINDOW
16	3'-0" X 5'-4"	1	FIXED WINDOW
17	5'-0" X 6'-4"	1	CASEMENT WINDOW
18	1'-0" X 3'-2 1/2"	12	FIXED WINDOW



2 24" TIE BEAM DETAIL @ DOORS  
SCALE: 3/4"=1'-0"



NOTE:  
ALL EXTERIOR MASONRY WALLS TO BE  
CONSIDERED SHEAR WALLS

1 GROUND FLOOR PLAN  
SCALE: 1/4"=1'-0"

PATENT/COPYRIGHT:  
THE DESIGN DRAWINGS AND  
EXHIBITS ARE THE  
PROPERTY OF  
Contract CAD Services, Inc.  
UNAUTHORIZED REPRODUCTION  
AND/OR REUSE IS PROHIBITED  
AND MAY BE PROSECUTED IN  
ACCORDANCE WITH THE  
COPYRIGHT AND PATENT LAWS

DRAFTING PROVIDED BY:  
  
CONTRACT CAD SERVICES, INC.  
1120 Pinellas Bayway Suite 202  
Tierra Verde, FL 37115  
ph. (727) 579-4498  
fax (727) 906-9622  
www.contractcad.com  
e-mail info@contractcad.com

STRUCTURAL ENGINEER:

CONTRACTOR:  
**H.E. Feldman & Son,  
Inc. Builders &  
Remodelers**  
11405 4th Street East  
Treasure Island, Florida 33706  
Phone (727) 368-0603

CLIENT:

MARK	DATE	DESCRIPTION

SCALE: AS NOTED  
DRAFTING BY: J.L.L., T.R.K.  
CHECKED BY: H.R.  
JOB NUMBER: 2003-0519  
ISSUE DATE: 12-08-2003

GROUND FLOOR PLAN

SHEET NO. SHEET 5 OF 14

4.0